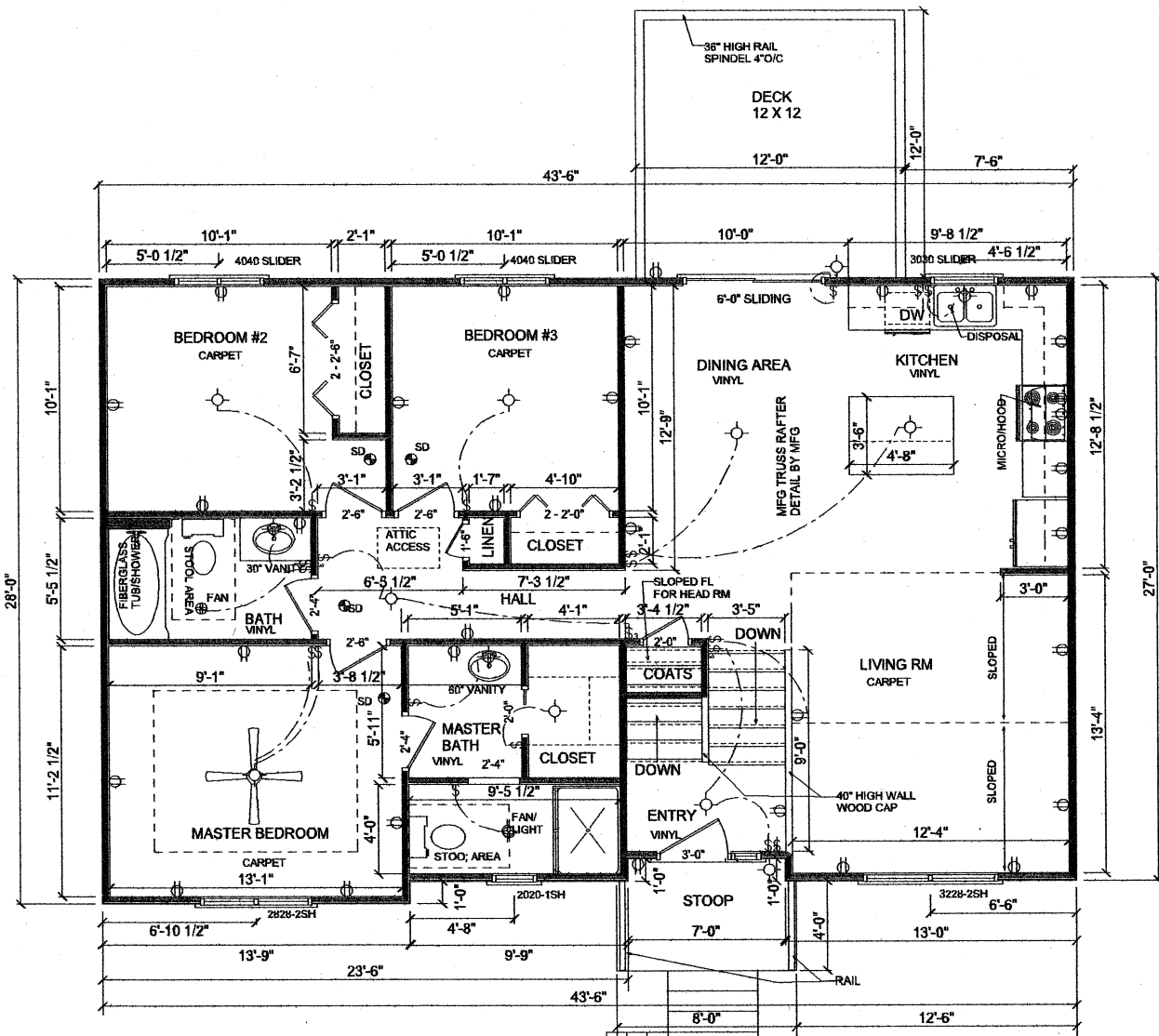
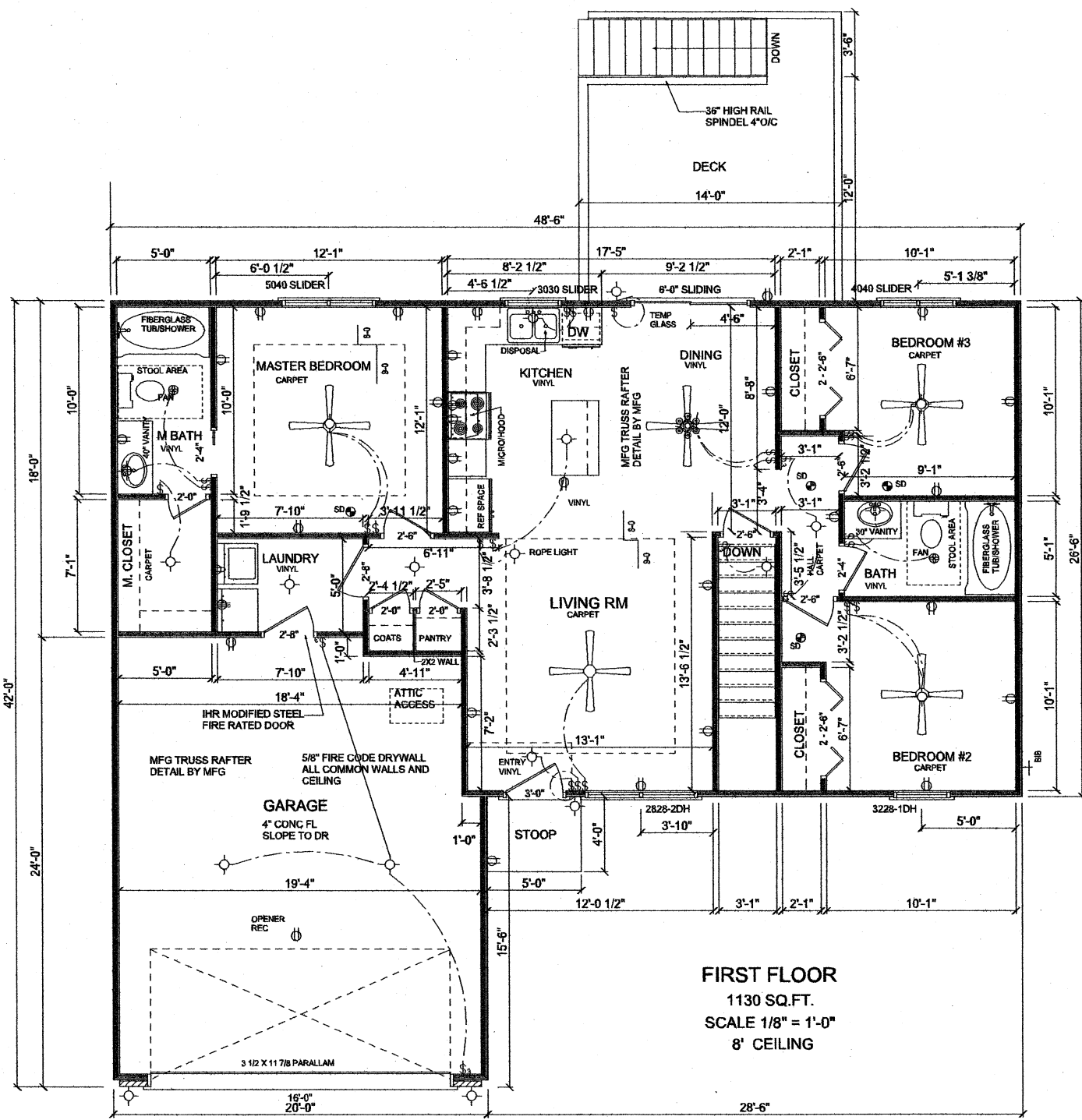


**FOUNDATION/LOWER LEVEL**  
 SCALE 1/8" = 1'-0"



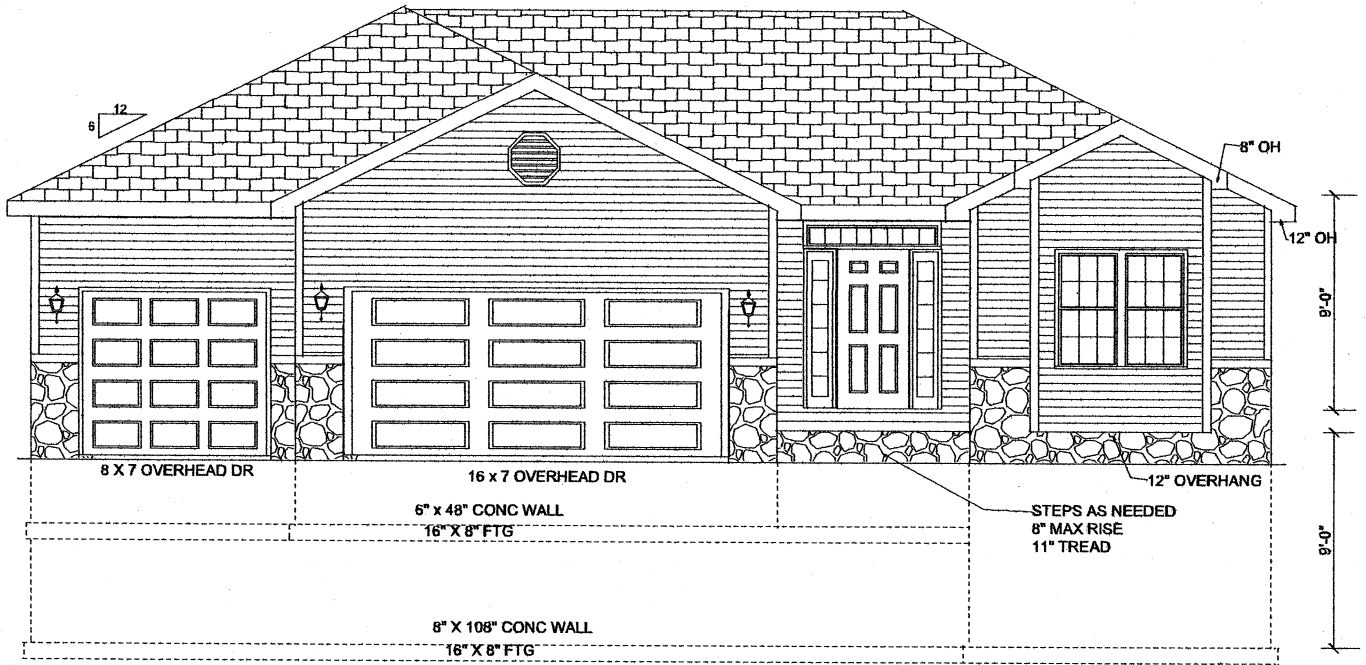
**MAIN FLOOR**  
 1180 SQ.FT.  
 SCALE 1/8" = 1'-0"  
 8' CEILING

STEPS AS NEEDED  
 8" MAX RISE  
 11" TREAD

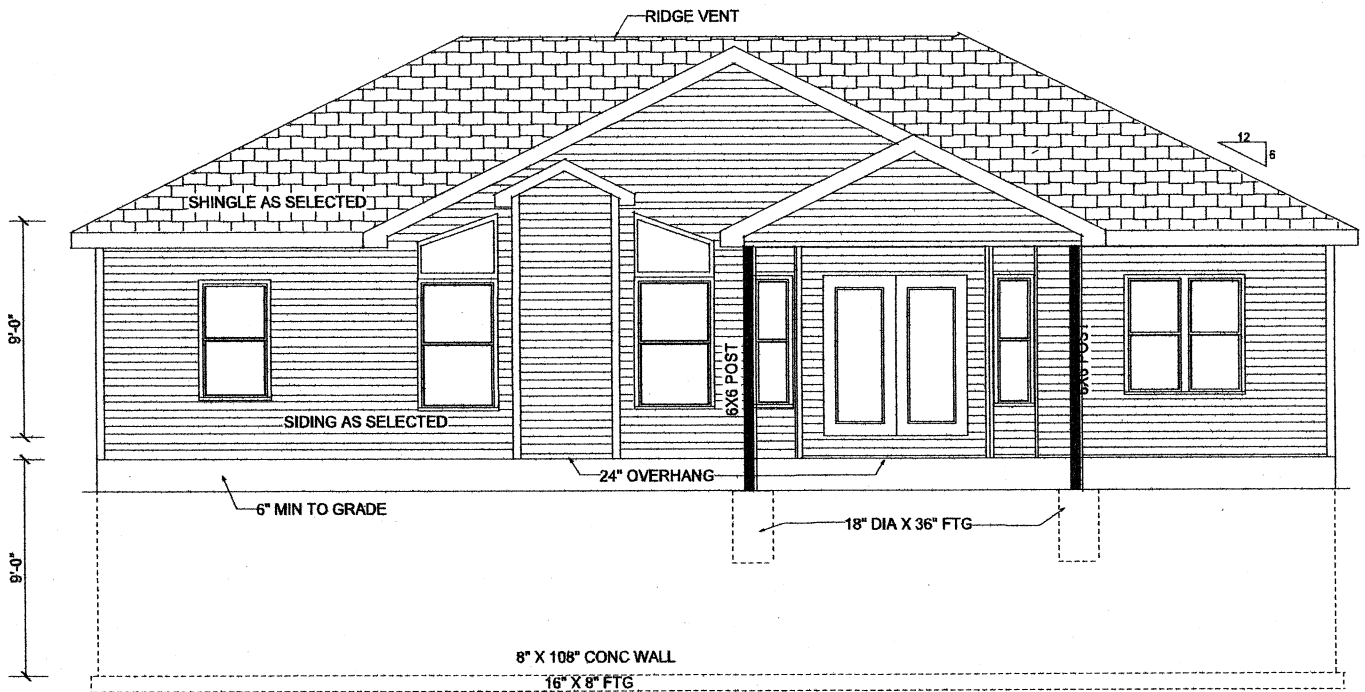


**FIRST FLOOR**  
 1130 SQ.FT.  
 SCALE 1/8" = 1'-0"  
 8' CEILING





FRONT



REAR

