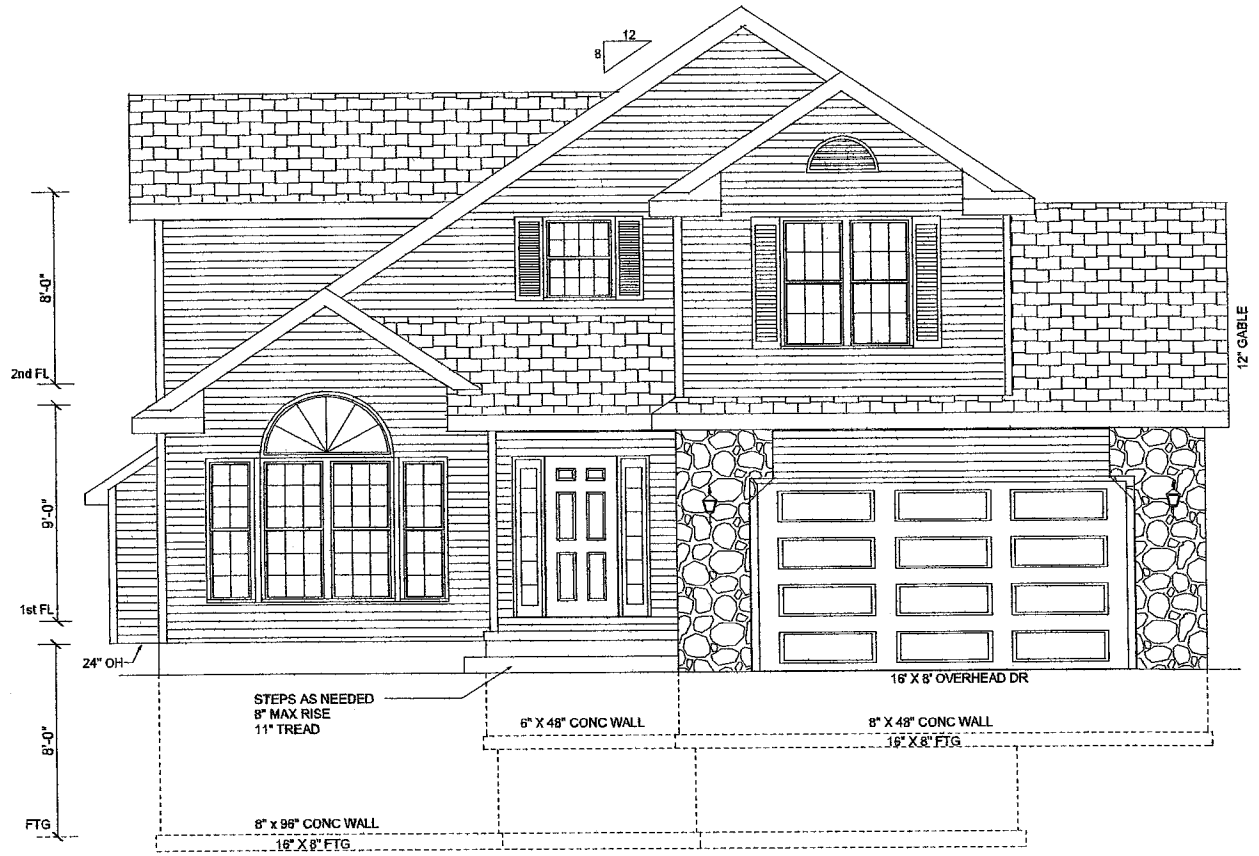
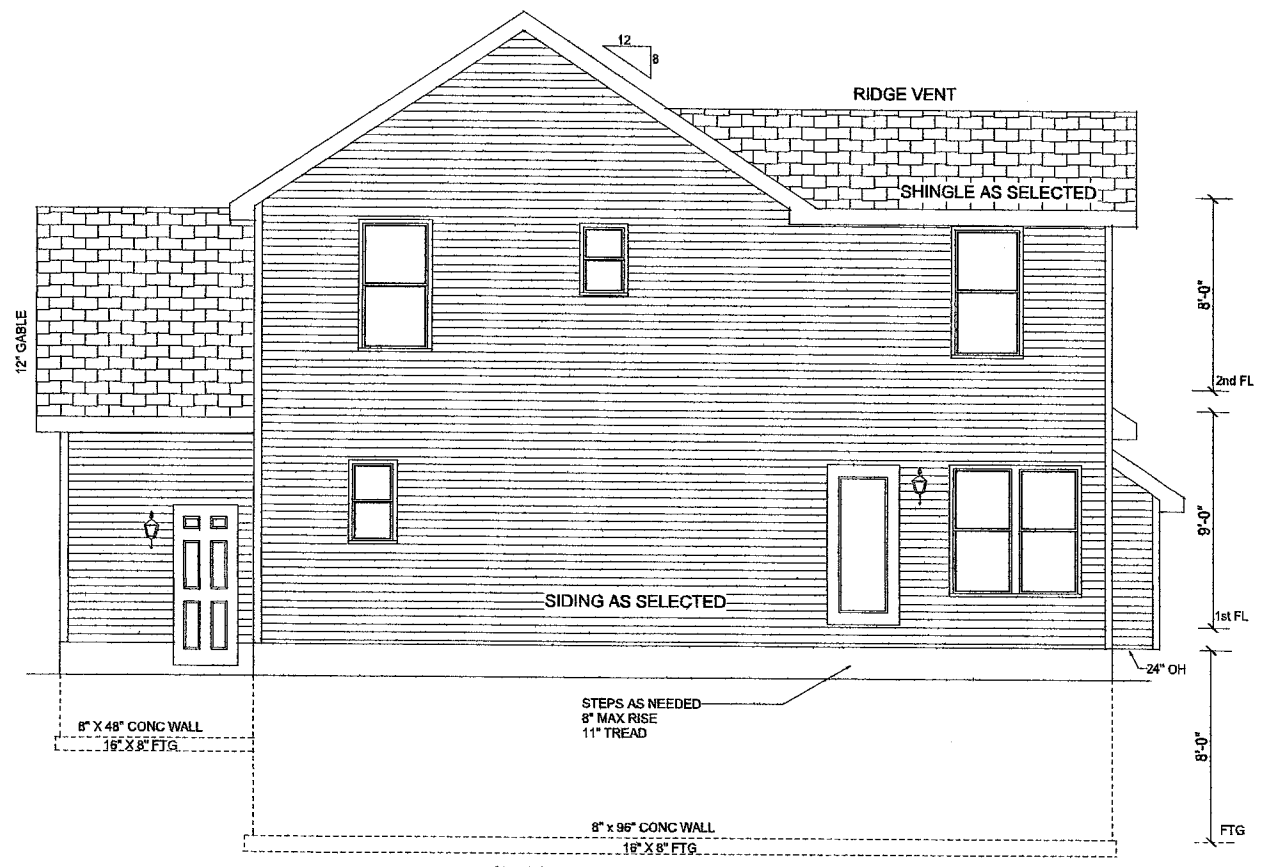


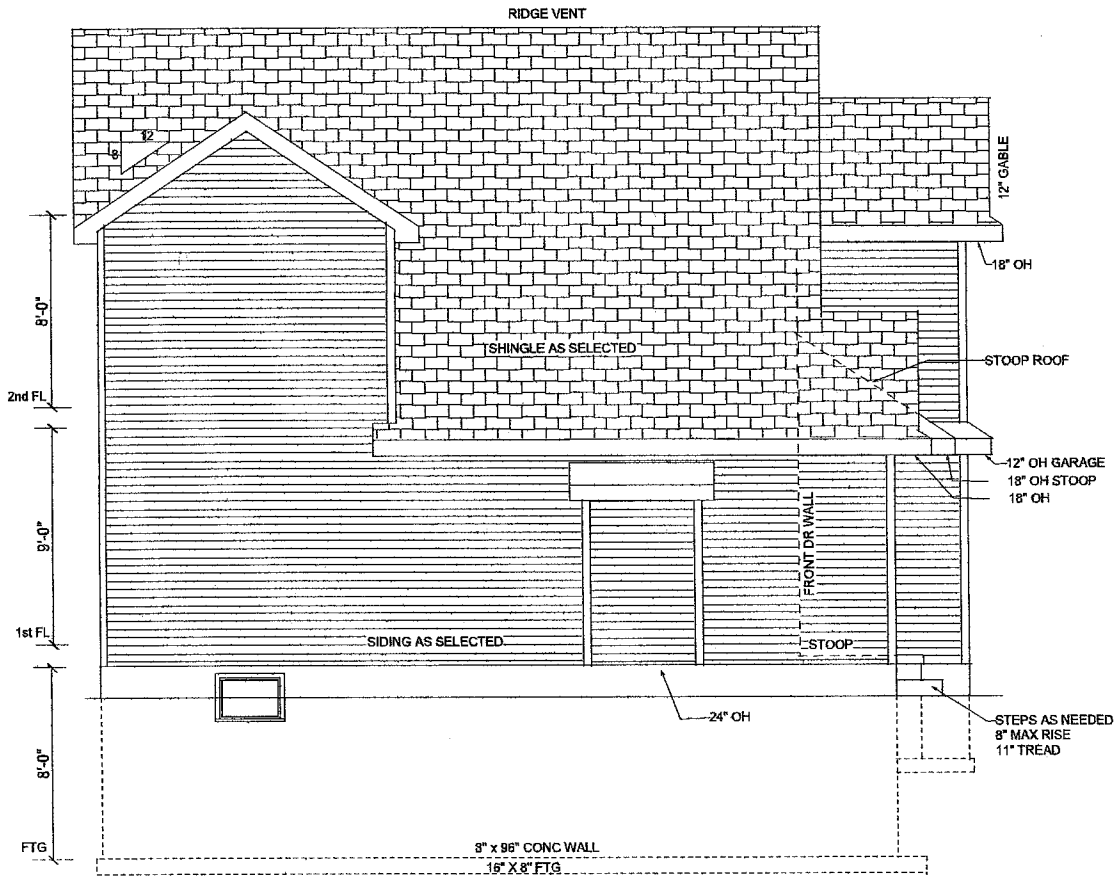
MONTROSE COURT
 LOT 3; BLK 1; ASPEN PARK ADDITION
 WAVERLY, LANCASTER COUNTY, NEBRASKA



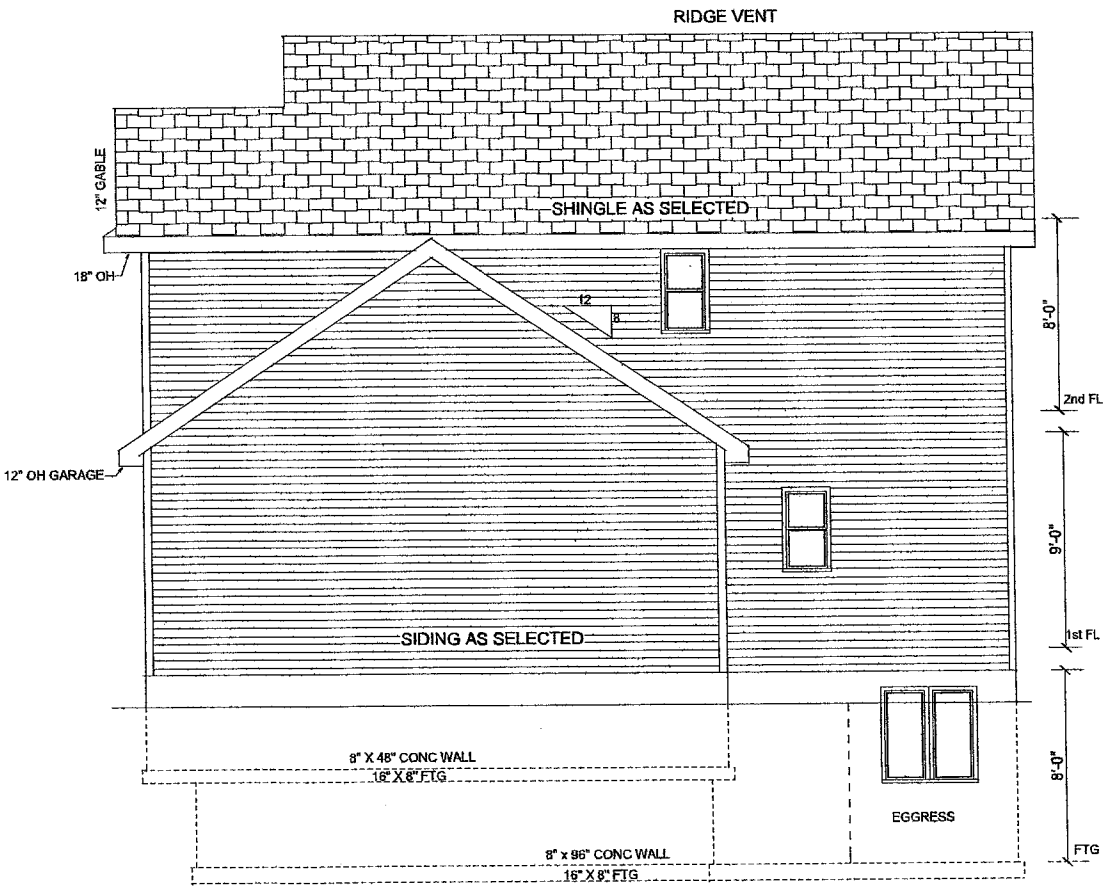
FRONT ELEVATION



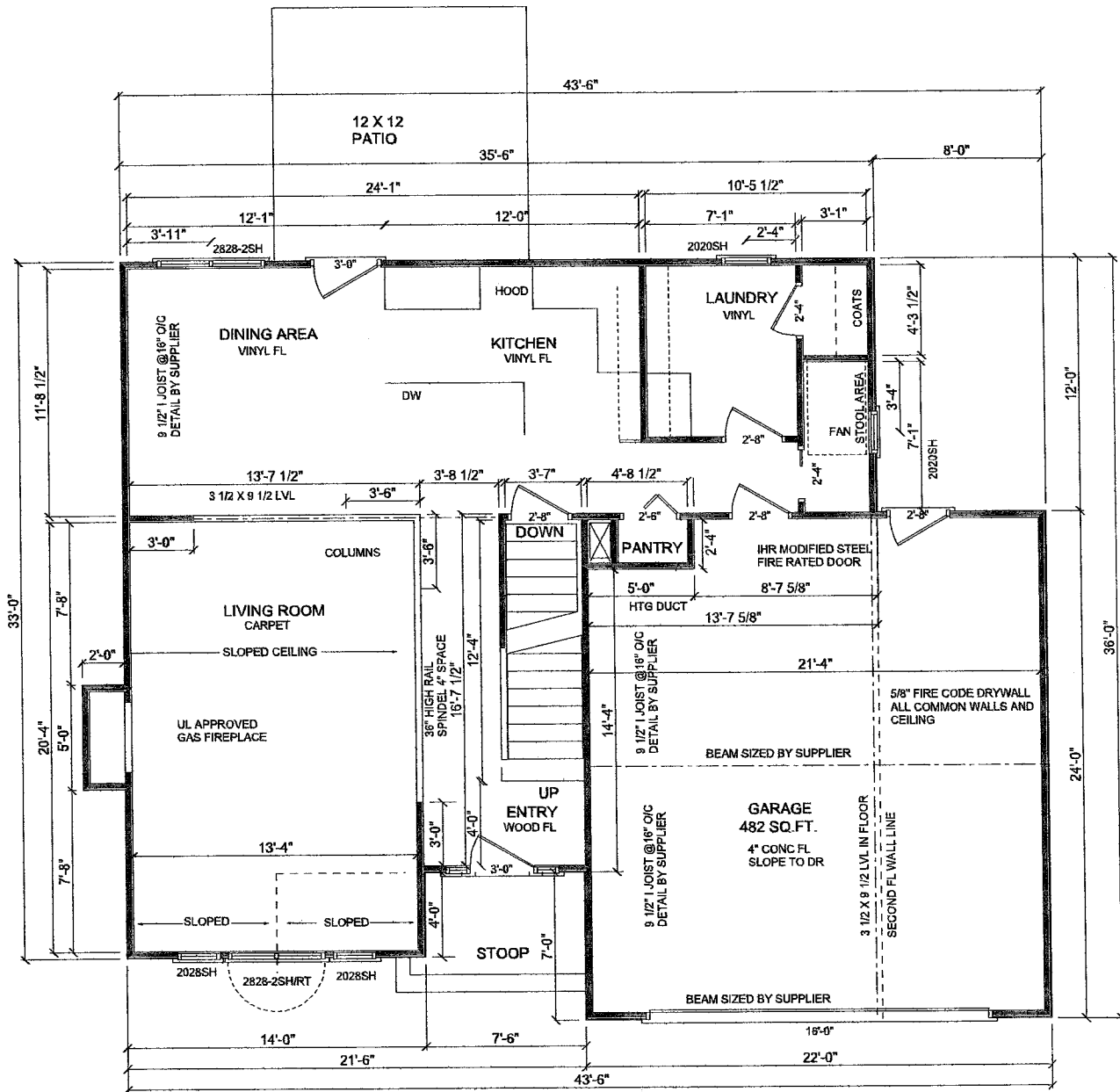
REAR ELEVATION



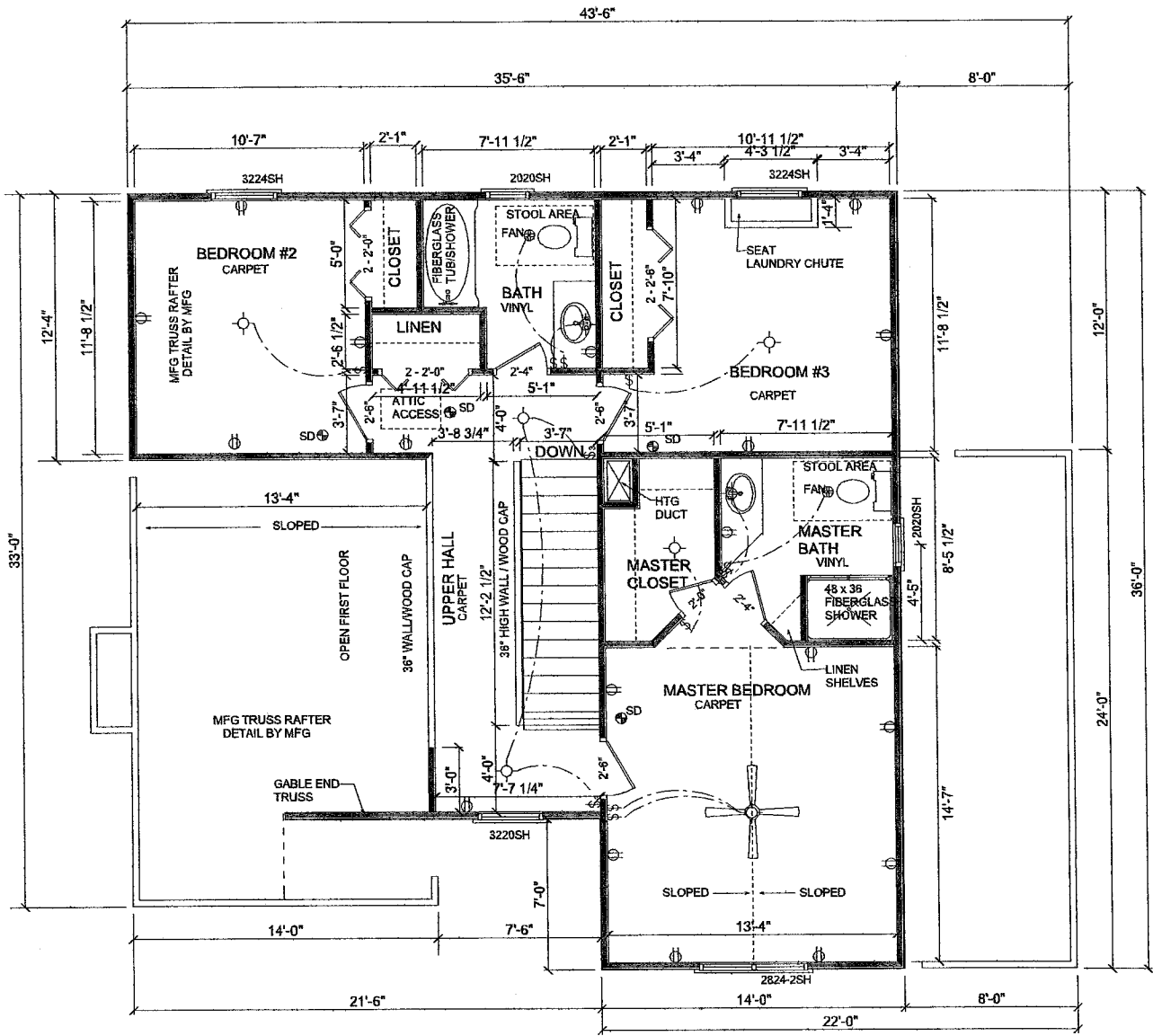
LEFT ELEVATION



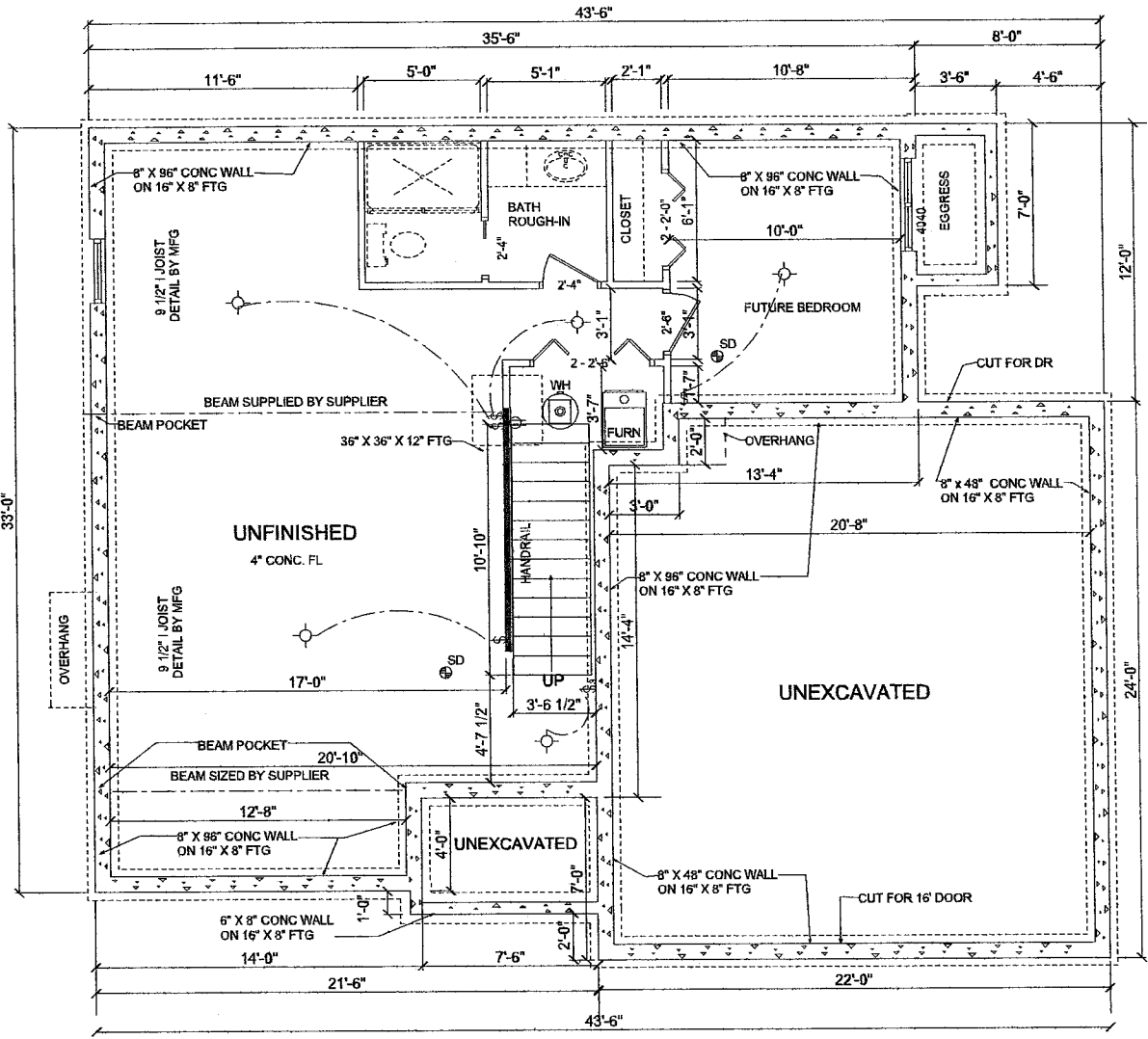
RIGHT ELEVATION



FIRST FLOOR 860 SQ.FT. SCALE 1/8" = 1'-0"
 9' CEILING



SECOND FLOOR 895 SQ.FT., SCALE 1/8" = 1'-0"
 8' CEILING



FOUNDATION 756 UNFINISHED SQ. FT. SCALE 1/8" = 1'-0"